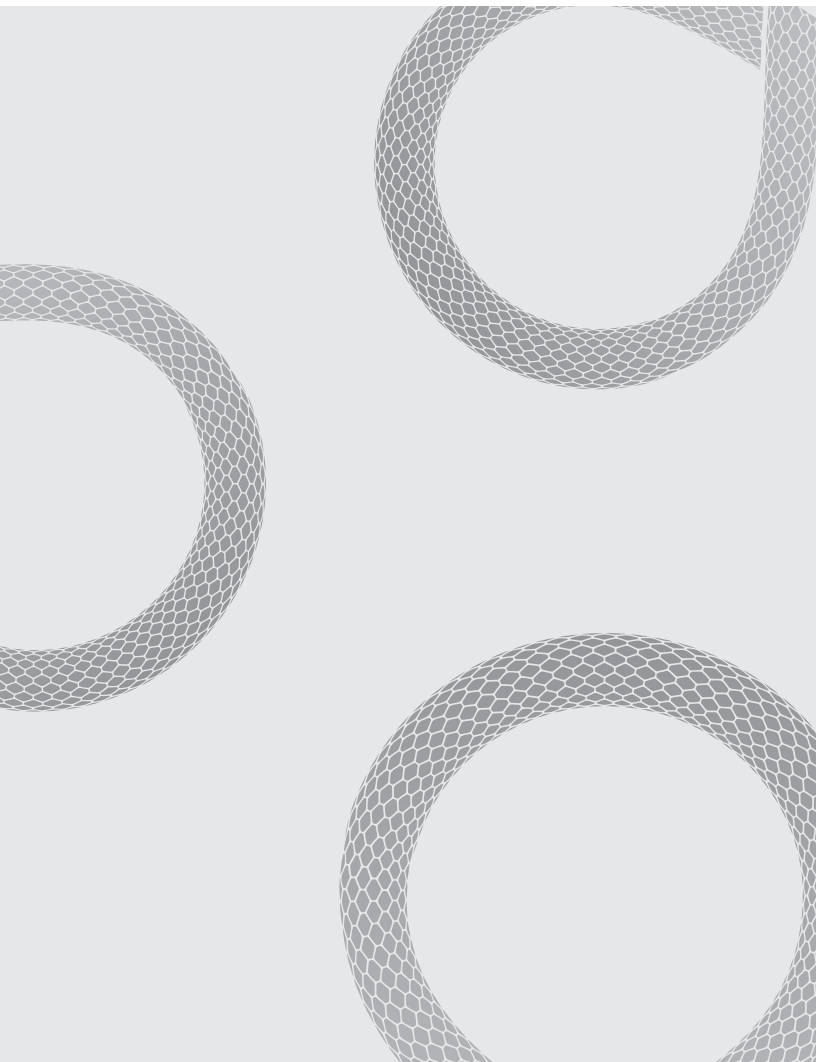


The logo for HMAX, with the letter 'H' in orange and 'MAX' in blue.

QUALITY HVAC ACCESSORIES

DUCTLESS
ACCESSORIES
**COMPLETE
SOLUTIONS**



THE HMAX ADVANTAGE

HMAX provides the highest-quality performance HVAC installation accessories coupled with national distribution and premium support for the HVAC and HVACR industry. Headquartered in New York, the company's flagship products are ISO and ISOTECH UV pre-insulated copper linesets, condensate pumps, cover systems / drains, condenser supports, refrigeration ball valves, fittings and additional accessories. HMAX is a leading supplier of high-efficiency, innovative equipment and accessories for ductless mini-split installations as well as residential unitary and light commercial applications.

HMAX's mission is to make it easy for our wholesaler and distributor partners by providing the highest-quality, reliable minisplit system accessories that work together from a single, controlled manufacturing/supplier source. We utilize our representative network to deliver HVAC product availability and supply chain cost advantages for our customers while providing quick and reliable customer service and support through our business development and marketing teams.

For the global market, HMAX provides manufacturers with a dedicated U.S. distribution channel backed by strong relationships and decades of industry knowledge and insight.

HMAX makes it easy for contractors by providing a full line of the highest-quality, durable, innovative HVAC parts and ductless system accessories from a single source. This allows for increased access to advanced products, with the highest quality and competitive pricing. Our mission saves installation time, stress and money from unnecessary customer call-backs and offers exceptional customer support from industry professionals. We provide contractors with the resources they need to meet any and all of their customer needs.

HMAX is committed to delivering superior value, the highest quality products with unmatched performance and exceptional service to our partners every day.

HMAX - Quality HVAC Accessories

Call: 1-844-500-HMAX

Email: info@hmax.com

© 2025 HMAX | All rights reserved.
Subject to change without notice.

HMAX.com **@hmax_hvac**



DISTRIBUTOR BENEFITS

- Supply chain cost advantages from single, controlled source
- Product availability and warehousing
- Robust representative support network

CONTRACTOR BENEFITS

- Less repair calls and less headaches
- Providing higher quality product gives the installer a better reputation
- Less time wasted on long diagnosis and repairs
- More time for additional jobs
- Lineset replacement is messy and time consuming for you and homeowner

HOMEOWNER BENEFITS

- Less down-time and headaches
- System protection and efficiency by surrounding it with the highest quality accessories
- Support from a quality company that stands behind their products



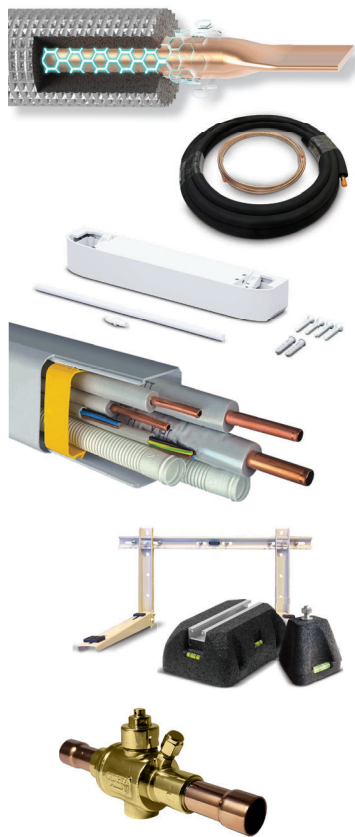
**SCAN FOR SKU
and ORDERING**

or go to [HMAX.com](https://www.hmax.com)

Full catalog available
for special order.

TABLE OF CONTENTS DUCTLESS SOLUTIONS

HMAX
QUALITY HVAC ACCESSORIES



- PRE-INSULATED COPPER LINESETS**
 - ISOTECH UV 3
 - ISOPOLAR 5
 - ISOTUFF 7
 - UNIMAX 9
 - REFRIGERATION TUBING 10
- CONDENSATE PUMPS**
 - ZENFLOW 11
 - TATTOO SERIES 12
 - RAPIDO SERIES 13
 - STORMLIFT 14
- COVER SYSTEMS AND DRAINS**
 - NICE COVER SYSTEM 15
 - ACCESSORIES 16
 - NICE DRAIN HOSE AND ACCESSORIES 17
 - SLIMBOX ROUGH-IN BOX 18
 - SLIMBOX ROUGH PRO 19
- CONDENSER SUPPORTS AND ACCESSORIES**
 - SUMO RUBBER SUPPORTS 20
 - ORION MODULAR FOOT 21
 - MAX BRACKETS 22
 - HEAVY DUTY WALL BRACKETS & SUPPORTS 23
 - ATLAS CONDENSER STAND 24
 - CONDENSER'S ACCESSORIES 25
- REFRIGERATION BALL VALVES AND FITTINGS**
 - BALL VALVES 26
 - ODS x ODS 27
 - COPPER TUBE 28
 - MAXFLARE FITTING 29
- LINESET COMPARISON** 30

WHY CHOOSE ISOTECH UV LINESETS



Whether it's for mini-split, residential unitary, heat pump or light commercial installations, choose the lineset that offers premium quality and performance. Available in 1/2" and 3/4" thickness.



HMAX
QUALITY HVAC ACCESSORIES

- 1. Prevent Costly Calls with the BEST Coated Copper Pipe**
Superior, anti-corrosive coated, 99.90% min. copper tubing that's free from leak and kink-causing imperfections as well as formicary corrosion. Stay protected with the BEST coated copper tube in the industry while saving time and money with less service calls
 - 2. Flexible Insulation Easily Fits Any Application**
Flexible foam insulation bends easily to fit any installation
 - 3. UV & Tear Resistant Tuff Jacket**
Tough, tear-free quality that is resistant to sunlight and equipment maintenance
 - 4. Quick and Easy Install with Less Service Calls**
No field-applied coating or jacketing needed
- Products are made to meet requirements of ASTM B1003**

ISOTECH UV Lineset	Features
✓	Sunlight UV, tear, fire and water (UL94) resistant sheath ⁽¹⁾
✓	Superior certified R-Values to meet city codes and regulations
✓	Certified 99.9% pure ASTM B280 copper
✓	Formicary corrosion resistant (moisture, oxygen and VOCs)
✓	Protective polymer coated copper
✓	Quick and easy install - No field-applied coating or jacketing

⁽¹⁾ External UV-resistance tested according to ASTM standard to evaluate the impact of UV exposure on its mechanical properties, showing no degradation. Tested in accordance of UL94, to be top rated for Surface Burning Characteristics. Rated for plenum applications.

Your preferred roll length is not listed? More options are available, contact us for details.

SINGLE-PIPE COILS ORDERING GUIDE				
Part Number	Pipe Size	Insulation Thickness	Coil Length	Coils Per Pallet
ISOTECHUV14-12-50	1/4"	1/2"	50'	22
ISOTECHUV38-12-50	3/8"	1/2"	50'	21
ISOTECHUV12-12-50	1/2"	1/2"	50'	18
ISOTECHUV58-12-50	5/8"	1/2"	50'	17
ISOTECHUV34-12-50	3/4"	1/2"	50'	16
ISOTECHUV78-12-50	7/8"	1/2"	50'	13
ISOTECHUV14-12-164	1/4"	1/2"	164'	12
ISOTECHUV38-12-164	3/8"	1/2"	164'	13
ISOTECHUV12-12-164	1/2"	1/2"	164'	10
ISOTECHUV58-12-164	5/8"	1/2"	164'	10
ISOTECHUV34-12-82	3/4"	1/2"	82'	11
ISOTECHUV78-12-82	7/8"	1/2"	82'	11

*Now Available 3/4" Insulation thickness offered in 50ft rolls
Ordering Guide: ISOTECHUV**-34-50 (Replace ** with your required pipe diameter, as per standard ISOTECH ordering format)

AGGRESSIVE ENVIRONMENTAL TESTING DIGITAL VIEWS			
144 Hour Test	240 Hour Test	480 Hour Test	Coated/Uncoated
			Isotech UV Coated
			UNCOATED BARE Copper Piping

ASTM G154 ACCELERATED OUTDOOR AND UV ENVIRONMENTAL TESTING DIGITAL VIEWS			
1000 Hour Test	2000 Hour Test	3000 Hour Test	Coated/Uncoated
			Isotech UV Coated and insulated

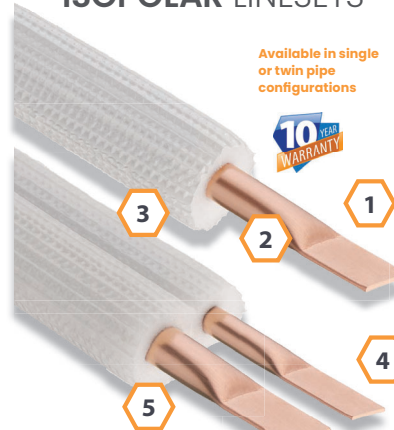
ABOVE The insulation and outer jacket of the Isotech UV product has been tested under the ASTM G154. Specimens were exposed as per ASTM G154 Cycle

1 - Standard Practice for performing accelerated outdoor weathering of nonmetallic materials using concentrated natural sunlight (Ultraviolet Lamp Apparatus) - showing no signs of degradation on the external sheath.

AGGRESSIVE ENVIRONMENTAL TESTING METALLOGRAPHIC VIEWS			
Isotech UV Coated		Uncoated Bare Copper Piping	
0.010"	0.001"	0.010"	0.001"
		PITTING	CORROSION

LINESETS

WHY CHOOSE ISOPOLAR LINESETS



Available in single or twin pipe configurations



1. Consistently Specified by Engineering Firms
Regarded as some of the toughest and most reliable linesets available for commercial applications designed to comply with energy conservation standards and metropolitan mechanical codes.

2. Superior ASTM B280 Copper
Free of imperfections that cause leaks and kinks, ISO lineset copper is produced from our proprietary foundry

3. Tear Resistant Jacket
Tough, white sheathing is highly resistant to tearing but trims clean saving time and money with less service calls

4. Quality Above All
ISO linesets outperform the competition by keeping quality as the number one priority

5. Safe, Non-Corrosive Insulation
ISOPOLAR's PE insulation classifies as an A+ for emission, and deemed harmless to copper pipe



Preferred by HVAC professionals for mini-split, residential unitary, heat pump and light commercial installations. ISO makes every job look cleaner and is available in 1/2", 3/4" and 1" thicknesses.



Products are made to meet requirements of ASTM B1003
Tight, protective packaging for efficient storage

Product certifications available upon request.

ISOPOLAR Lineset	Features
✓	Reliable, closed-cell polyethylene insulation with tear-resistant sheath
✓	Crimped ends to keep inside surfaces clean prior to installation
✓	Superior material - ASTM B280 type ACR copper
✓	Durable jacket marked by the foot for maximum waste reduction
✓	High resistance to moisture and water-vapor intrusion
✓	Quick and easy install - No field-applied coating or jacketing

Your preferred roll length is not listed? More options are available, contact us for details.

SINGLE-PIPE COILS ORDERING GUIDE				
Part Number	Pipe Size	Insulation Thickness	Coil Length	Coils Per Pallet
ISO14-12-50	1/4"	1/2"	50'	22
ISO38-12-50	3/8"	1/2"	50'	21
ISO12-12-50	1/2"	1/2"	50'	18
ISO58-12-50	5/8"	1/2"	50'	17
ISO34-12-50	3/4"	1/2"	50'	16
ISO78-12-50	7/8"	1/2"	50'	13
ISO14-12-164	1/4"	1/2"	164'	12
ISO38-12-164	3/8"	1/2"	164'	13
ISO12-12-164	1/2"	1/2"	164'	10
ISO58-12-164	5/8"	1/2"	164'	10
ISO34-12-82	3/4"	1/2"	82'	11
ISO78-12-82	7/8"	1/2"	82'	11
ISO14-34-50	1/4"	3/4"	50'	16
ISO38-34-50	3/8"	3/4"	50'	13
ISO12-34-50	1/2"	3/4"	50'	13
ISO58-34-50	5/8"	3/4"	50'	11
ISO34-34-50	3/4"	3/4"	50'	12
ISO78-34-50	7/8"	3/4"	50'	10
ISO14-1-50	1/4"	1"	50'	10
ISO38-1-50	3/8"	1"	50'	11
ISO12-1-50	1/2"	1"	50'	11
ISO58-1-50	5/8"	1"	50'	11
ISO34-1-50	3/4"	1"	50'	10
ISO78-1-50	7/8"	1"	50'	8

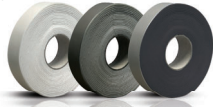
TWIN-PIPE COILS ORDERING GUIDE				
Part Number	Pipe Size	Insulation Thickness	Coil Length	Coils Per Pallet
BI14X38-12-50	1/4" + 3/8"	1/2"	50'	14
BI14X12-12-50	1/4" + 1/2"	1/2"	50'	12
BI14X58-12-50	1/4" + 5/8"	1/2"	50'	12
BI38X12-12-50	3/8" + 1/2"	1/2"	50'	12
BI38X58-12-50	3/8" + 5/8"	1/2"	50'	11

ISOTAPE ORDERING GUIDE ACCESSORY	
ISOTAPE-WH	White 2" x 30' POLYETHYLENE tape - Use with white polyethylene insulation
ISOTAPE-BK	Black 2" x 30' ELASTOMER insulating tape - Use for conventional black rubber insulation
ISOTAPE-GY	Grey 2" x 30' insulating tape - for perfect match with ISOTECH line sets

LINESETS

Technical Specifications

- Made according to ASTM C 1427-07, type I (tubular), grade I (insulation material for use on typical commercial system non-cross-linked)
- Insulation meets industry requirements for surface burning and ignition resistance
- CFC and HCFC damaging ozone gas free External LDPE foil covering which adheres to a non-flammable base, melts flameless and belongs to Self-extinguish Class 1
- Marked at every foot with product details (pipe and insulation diameters), production date and time
- Additional protection on foam insulation reduces risk of tearing
- High resistance to water-vapor diffusion
- Rated for plenum applications
- Exterior insulation must be protected from exterior hazards (ASHRAE 90.1-2013 and IECC- 2015)
- After installation of line sets, ends should be properly sealed to prevent moisture infiltration (See ISOTAPE below)
- Product certifications available upon request



ISOTAPE

- Eco-friendly, white poly band also available in black and grey closed-cell elastomer
- Ideal for wrapping indoor refrigerant pipe connections and for bundling piping together for easy, fast installation
- Temperatures from -20°F to 175°F with low thermal conductivity
- Extremely low water vapor permeability and absorption

WHY CHOOSE ISOTUFF LINESETS



Available in single or twin pipe configurations

1. Consistently Specified by Engineering Firms
Regarded as some of the toughest and most reliable linesets available for commercial applications

2. Superior ASTM B280 Copper
Free of imperfections that cause leaks and kinks, ISO lineset copper is produced from our proprietary foundry

3. Tear Resistant Jacket
Tough, black sheathing is highly resistant to tearing but trims clean saving time and money with less service calls

4. Quality Above All
ISO linesets outperform the competition by keeping quality as the number one priority

5. Safe, Non-Corrosive Insulation
ISOTUFF's PE insulation classifies as an A+ for emission, and deemed harmless to copper pipe



Preferred by HVAC professionals for mini-split, residential unitary, heat pump and light commercial installations. ISO makes every job look cleaner and is available in 1/2", 3/4" and 1" thicknesses.



Products are made to meet requirements of ASTM B1003

Tight, protective packaging for efficient storage

ISOTUFF Lineset	Features
✓	Reliable, closed-cell polyethylene insulation with tear-resistant sheath
✓	Crimped ends to keep inside surfaces clean prior to installation
✓	Superior material - ASTM B280 type ACR copper
✓	Durable jacket marked by the foot for maximum waste reduction
✓	High resistance to moisture and water-vapor intrusion
✓	Quick and easy install - No field-applied coating or jacketing

Your preferred roll length is not listed? More options are available, contact us for details.

SINGLE-PIPE COILS ORDERING GUIDE				
Part Number	Pipe Size	Insulation Thickness	Coil Length	Coils Per Pallet
ISOTUFF14-12-50	1/4"	1/2"	50'	22
ISOTUFF38-12-50	3/8"	1/2"	50'	21
ISOTUFF12-12-50	1/2"	1/2"	50'	18
ISOTUFF58-12-50	5/8"	1/2"	50'	17
ISOTUFF34-12-50	3/4"	1/2"	50'	16
ISOTUFF78-12-50	7/8"	1/2"	50'	13
ISOTUFF14-12-164	1/4"	1/2"	164'	12
ISOTUFF38-12-164	3/8"	1/2"	164'	13
ISOTUFF12-12-164	1/2"	1/2"	164'	10
ISOTUFF58-12-164	5/8"	1/2"	164'	10
ISOTUFF34-12-82	3/4"	1/2"	82'	11
ISOTUFF78-12-82	7/8"	1/2"	82'	11
ISOTUFF14-34-50	1/4"	3/4"	50'	16
ISOTUFF38-34-50	3/8"	3/4"	50'	13
ISOTUFF12-34-50	1/2"	3/4"	50'	13
ISOTUFF58-34-50	5/8"	3/4"	50'	14
ISOTUFF34-34-50	3/4"	3/4"	50'	12
ISOTUFF78-34-50	7/8"	3/4"	50'	10
ISOTUFF14-1-50	1/4"	1"	50'	10
ISOTUFF38-1-50	3/8"	1"	50'	11
ISOTUFF12-1-50	1/2"	1"	50'	11
ISOTUFF58-1-50	5/8"	1"	50'	11
ISOTUFF34-1-50	3/4"	1"	50'	10
ISOTUFF78-1-50	7/8"	1"	50'	8

TWIN-PIPE COILS ORDERING GUIDE				
Part Number	Pipe Size	Insulation Thickness	Coil Length	Coils Per Pallet
ISOTUFFB14X38-12-50	1/4" + 3/8"	1/2"	50'	14
ISOTUFFB14X12-12-50	1/4" + 1/2"	1/2"	50'	12
ISOTUFFB14X58-12-50	1/4" + 5/8"	1/2"	50'	12
ISOTUFFB138X12-12-50	3/8" + 1/2"	1/2"	50'	12
ISOTUFFB138X58-12-50	3/8" + 5/8"	1/2"	50'	11

ISOTAPE ORDERING GUIDE ACCESSORY	
ISOTAPE-WH	White 2" x 30' POLYETHYLENE tape - Use with white polyethylene insulation
ISOTAPE-BK	Black 2" x 30' ELASTOMER insulating tape - Use for conventional black rubber insulation
ISOTAPE-GY	Grey 2" x 30" insulating tape - for perfect match with ISOTECH line sets

LINESETS

Technical Specifications

- Made according to ASTM C 1427-07, type I (tubular), grade I (insulation material for use on typical commercial system non-cross-linked)
- Insulation meets industry requirements for surface burning and ignition resistance
- CFC and HCFC damaging ozone gas free External LDPE foil covering which adheres to a non-flammable base, melts flameless and belongs to Self-Extinguish Class I
- Marked at every foot with product details (pipe and insulation diameters), production date and time
- Additional protection on foam insulation reduces risk of tearing
- High resistance to water-vapor diffusion
- Rated for plenum applications
- Exterior insulation must be protected from exterior hazards (ASHRAE 90.1-2013 and IECC- 2015)
- After installation of line sets, ends should be properly sealed to prevent moisture infiltration (See ISOTAPE below)
- Product certifications available upon request



ISOTAPE

- Eco-friendly, white polyethylene band - also available in black closed-cell elastomer
- Highly flexible, physically cross linked with compliant thermal conductivity
- Ideal for wrapping indoor refrigerant pipe connections and for bundling piping together for easy, fast installation
- Temperatures from -20°F to 175°F with low thermal conductivity
- Extremely low water vapor permeability and absorption

WHY CHOOSE UNIMAX UNITARY LINESETS

1. Insulated

UL approved insulation with tough jacket.

2. ASTM Copper

The copper tube is extruded according to ASTM standards.

3. Suited to Job Needs

Offered in multiple configurations and lengths (suction line and liquid line) to suit the needs of any job.

4. Quality Above All

The highest quality for unitary system applications.



HMAX
QUALITY HVAC ACCESSORIES



ORDERING GUIDE				
Part Number	Liquid Line	Suction Line	Insulation Thickness	Roll Length
UNIMAX-38X58-12-50	3/8"	5/8"	1/2"	50'
UNIMAX-38X34-12-50	3/8"	3/4"	1/2"	50'
UNIMAX-38X78-12-50	3/8"	7/8"	1/2"	50'
UNIMAX-38X58-34-50	3/8"	5/8"	3/4"	50'
UNIMAX-38X34-34-50	3/8"	3/4"	3/4"	50'
UNIMAX-38X78-34-50	3/8"	7/8"	3/4"	50'

Product certifications available upon request.

UNIMAX linesets are manufactured to the highest quality thereby creating one of the most reliable linesets for unitary system applications. Offered in multiple configurations and lengths (suction line and liquid line) to suit the needs of any job. The copper tube is extruded according to ASTM standards and insulated with UL approved material.

CUSTOM LENGTHS AVAILABLE UPON REQUEST.

WHY CHOOSE HMAX REFRIGERATION TUBING

Refrigeration tubing manufactured to industry standards, engineered and tested for compatibility with all refrigerants. Shrink-wrapped and securely packaged to ensure maximum protection.



LINESETS

Part #	Pipe size	Roll length
CUTUBE-14-50	1/4"	50'
CUTUBE-38-50	3/8"	50'
CUTUBE-12-50	1/2"	50'
CUTUBE-58-50	5/8"	50'
CUTUBE-34-50	3/4"	50'
CUTUBE-78-50	7/8"	50'

WHY CHOOSE ZENFLOW CONDENSATE PUMPS

FEATURES & BENEFITS

The ZENFLOW Condensate Pump efficiently removes condensate from minisplit HVAC units. It handles up to 5.3 gallons per hour (20 l/h) and can pump water up to 32.8 feet (10 M). The low-noise membrane pump operates at just 19 dBA, making it ideal for both residential and commercial use. Its compact design allows easy installation under the air handler, and the integrated non-return valve prevents backflow. With low energy consumption, multi-voltage support (100-240V, 50/60Hz), and easy maintenance, the ZENFLOW Pump ensures reliable, durable performance.

- Powerful Performance** - Rated for 10 kW | 34,000 Btu capacity, the pump can handle up to 5.3 gallons per hour, effectively pumping water up to 32.8 feet (10 M).
- Quiet Operation** - Operating at sound levels as low as 19 dBA, this pump ensures minimal noise, allowing you to enjoy a peaceful environment without interruption.
- Compact & Stylish** - With its sleek, compact design and stylish wall cladding, the pump seamlessly integrates into any minisplit system setup, providing both functionality and aesthetic appeal.
- Easy Installation** - Designed for simple, hassle-free installation, the pump can be mounted directly under your HVAC unit on either side.

QUICK REFERENCE GUIDE	
Part Number	ZENFLOW
For Conditioners Up To	10 kW
Main Voltage & Frequency	100-240V, 50/60HZ
Power Consumption	Operation: 4 Standby: 1.5W
Max. Flow Rate	5.3 g/h / 20 l/h
Max. Delivery Height	32.8' / 10 M
Pump Unit (L/W/H)	12.4 x 21 x 1.7" / 315 x 43 x 43 mm
Alarm Switch	100-240V, 5A NO/NC
Pressure Hose	6 x 1.5mm
Sound Levels	As low as 19 dBA



- Efficient & Energy-Saving** - The low-noise membrane pump is engineered for minimal energy consumption, providing efficient operation without the need for excess power.
- Versatile** - Compatible with a wide range of voltage settings, supporting 100-240V, 50/60Hz for versatile use in various locations.
- Durable & Reliable*** - Featuring an integrated non-return valve to prevent condensate backflow and easy maintenance with a cover that doubles as the tank, this pump ensures long-lasting reliability.



WHY CHOOSE TATTOO CONDENSATE PUMPS

CONTENTS

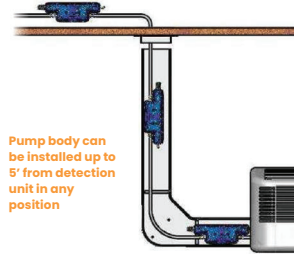
1. TATTOO Pump Body
2. Plug & Play Detection Unit; 5' Communication Wire Included
3. Connection Elbow
4. Ventilation Tube
5. Fixing Screws and Anchors
6. Double-sided Foam Adhesive

LESS THAN
19 DB
NEAR SILENT



FEATURES & BENEFITS

- **Near silent** - Less than 19 dB noise rating with built-in rubber absorbers
- Pre-wired alarm contact
- Factory-installed check valve
- Normally open/normally closed alarm 100V to 240V/8A
- **Up to 25' vertical lift**
- **Can be installed up to 5' from detection unit in any position**
- **Thermal security of 230°F (110°C)**
- **Rigid Swiss quality standards** - Engineered, manufactured and tested
- **For systems up to 54,000 BTU**



QUICK REFERENCE GUIDE		
Part Number	TATTOO16-120V	TATTOO16-230V
Max Flow Rate	4.3 GAL/HR	4.3 GAL/HR
Flow Rate at 3'	3.8 GAL/HR	3.8 GAL/HR
Flow Rate at 10'	2.8 GAL/HR	2.8 GAL/HR
Max Dry Suction Height	3.3'	3.3'
Max Wet Suction Height	6.6'	6.6'
Max Delivery Height	29.5'	29.5'
Alarm Contact	NO/NC-120V / 8A	NO/NC-120V / 8A
Pump Dimensions (L/W/H)	5.9" x 2.2" x 1.1"	5.9" x 2.2" x 1.1"
Sensor Dimensions (L/W/H)	3.2" x 1.6" x 1.6"	3.2" x 1.6" x 1.6"
Weight	15.5 oz	15.5 oz
Power Supply	120V	230V
Noise Level	<19 dBA	<19 dBA

Engineered, manufactured and tested according to rigid Swiss quality standards.

12 | © 2025 HMAX | Information subject to change without notice. | Visit HMAX.com or contact: 1-844-500-HMAX | info@hmax.com

Product certifications available upon request.



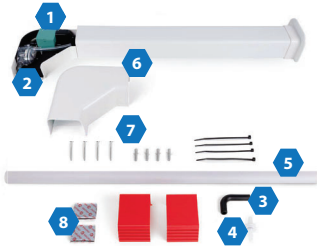
CONDENSATE PUMPS

WHY CHOOSE RAPIDO CONDENSATE PUMPS

FEATURES & BENEFITS

The RAPIDO condensate removal pump is integrated in a line cover elbow, to be installed directly on the outlet side of a ductless evaporator.

- **Versatile** - Can be used with all line-set cover systems
- **Easy to install** - The RAPIDO is integrated into a line-cover elbow, easily installed on the outlet side of any ductless evaporator
- **Plug & Play** - Comes complete with Plug & Play detection unit and 6' lead cable



PLUG & PLAY

CONTENTS

1. RAPIDO Pump Body
2. Plug & Play Detection Unit
3. Connection Elbow
4. Check Valve
5. Ventilation Tube
6. 90° Elbow, 3' of Line Set Cover
7. Fixing Screws and Anchors
8. Double-sided Foam Adhesive

Engineered, manufactured and tested according to rigid Swiss quality standards.

QUICK REFERENCE GUIDE	
Part Number	RAPIDO-230V
Max Flow Rate	2.1 GAL/HR
Flow Rate at 3'	1.9 GAL/HR
Flow Rate at 10'	1.4 GAL/HR
Max Dry Suction Height	3.3'
Max Wet Suction Height	6.6'
Max Delivery Height	28'
Alarm Contact	NO/NC-120V / 8A
Pump Dimensions (L/W/H)	3.4" x 1.8" x 1.7"
Sensor Dimensions (L/W/H)	3.2" x 1.6" x 1.6"
Weight	53 oz
Power Supply	230V
Noise Level	28.3 dBA



Tested at 120V/60 Hz with water at 68°F
Product certifications available upon request.

© 2025 HMAX | Information subject to change without notice. | Visit HMAX.com or contact: 1-844-500-HMAX | info@hmax.com | 13

WHY CHOOSE THE STORMLIFT TANK PUMP

FEATURES & BENEFITS

The STORMLIFT tank pump has been designed provide quiet, safe functionality with the highest performance on the market.

- **Quiet** - Vibration absorbing feet that isolate the pump from mounting surface and reduce noise
- **Adaptable** - Reversible tank with integrated hanging feet
- **Tough** - ABS thermoplastic plastic polymer tank and upper case
- **Quick-release** check valve system
- Two-stage float mechanism
- **Rust-free** - stainless steel hardware
- Ball-bearing motor
- **Protected** terminal connections
- Motor corrosion protection system
- Sewage pump style impeller **designed to collect and evacuate sediment buildup**



CONTENTS

1. STORMLIFT tank pump
2. Wall mounting brackets
3. Fixing screws and anchors

QUICK REFERENCE GUIDE

Part Number	STORMLIFT-115V
Overall LIFT	16'
Safety Overflow Switch	YES
Voltage	115V
Tubing Included	3/8" x 20'
Reservoir Capacity	0.26 GAL
Max GPH	52
Number of Inlets	5
Dimensions	5.51" x 4.33" x 5.51" (H/W/L)

STORMLIFT

Engineered, manufactured and tested according to rigid Swiss quality standards.

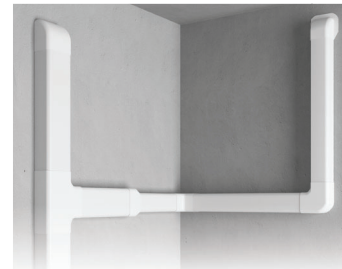
Product certifications available upon request.

WHY CHOOSE NICE COVER SYSTEMS

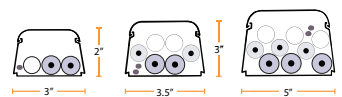
FEATURES & BENEFITS

NICE Duct Systems provide an extremely safe and compact covering for line sets, control cables, and drain lines. Every component features a radiused design that provides greater strength to all sections and corners and reduces sharp turns that could kink the line set. The fit and finish of the covers are of the highest quality and provide a beautiful, professional look to any outdoor or indoor applications.

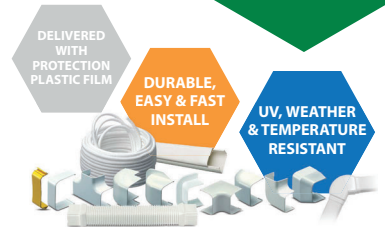
- **Easy installation** - Easy, fast snap-on installation
- **Durable** - Line set covers are strong, light and highly resistant to cracking, crushing and chipping
- **UV Retardant and temperature resistant** - Won't fade, crack or break down, even in extreme temperatures
- **Aesthetically pleasing** - NICE plastic covers are fully paintable to match any wall or siding color.
- **Delivered with protection plastic film** - to prevent damage during handling and installation.



AVAILABLE SIZES



HMAX
QUALITY HVAC ACCESSORIES



QUICK REFERENCE GUIDE

Nice Duct	Part Number	Dimensions
	NICE-DUCT-SM	3" x 2" x 6.5' (W/H/L)
	NICE-DUCT-M	3.5" x 3" x 6.5' (W/H/L)
	NICE-DUCT-LG	5" x 3" x 6.5' (W/H/L)
Tubing Support		
	NICE-TS-SM	3" x 2" (W/H)
	NICE-TS-M	3.5" x 3" (W/H)
	NICE-TS-LG	5" x 3" (W/H)
Upper Connector		
	NICE-UC-SM	3" x 2" (W/H)
	NICE-UC-M	3.5" x 3" (W/H)
	NICE-UC-LG	5" x 3" (W/H)
Wall Duct		
	NICE-WD-SM	3" x 2" (W/H)
	NICE-WD-M	3.5" x 3" (W/H)
	NICE-WD-LG	5" x 3" (W/H)
Corner Bend 90°		
	NICE-CB-SM	3" x 2" (W/H)
	NICE-CB-M	3.5" x 3" (W/H)
	NICE-CB-LG	5" x 3" (W/H)
Elbow Bend 90°		
	NICE-EB-SM	3" x 2" (W/H)
	NICE-EB-M	3.5" x 3" (W/H)
	NICE-EB-LG	5" x 3" (W/H)

WHY CHOOSE NICE COVER SYSTEM ACCESSORIES

COVER SYSTEMS AND DRAINS

FEATURES & BENEFITS

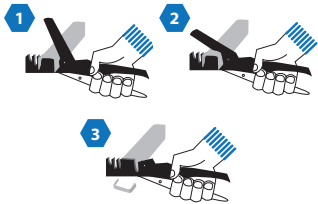
- Universal precision tool** - Can be used to cut any brand of line set cover
- Cost-efficient** - Blade is interchangeable (available separately) and can be easily removed to be sharpened
- Superior support** - Lid and base are supported while being cut, preventing any deformation and guaranteeing a precision cut with no imperfections



Part Number
NICE-DC

End Duct Terminal	Part Number	Dimensions (W/H)
	NICE-ED-SM	3" x 2" (W/H)
	NICE-ED-M	3.5" x 3" (W/H)
	NICE-ED-LG	5" x 3" (W/H)
Flat Bend		
	NICE-FB-SM	3" x 2" (W/H)
	NICE-FB-M	3.5" x 3" (W/H)
	NICE-FB-LG	5" x 3" (W/H)
Wall Terminal		
	NICE-WT-SM	3" x 2" (W/H)
	NICE-WT-M	3.5" x 3" (W/H)
	NICE-WT-LG	5" x 3" (W/H)
Tee Joint		
	NICE-TJ-M	3.5" x 3" (W/H)
	NICE-TJ-LG	5" x 3" (W/H)
Adjustable Flat Bend 45° - 135°		
	NICE-AFB-SM	3" x 2" (W/H)
	NICE-AFB-M	3.5" x 3" (W/H)
Joint Reduction		
	NICE-RD-M	3.5" x 3" - 3" x 2" (W/H)
	NICE-RD-LG	5" x 3" - 3.5" x 3" (W/H)
Flexible Sleeve		
	NICE-FS-SM	3" x 2" (W/H)
	NICE-FS-M	3.5" x 3" (W/H)
	NICE-FS-LG	3.5" x 5" (W/H)

PRECISION CUTS IN THREE EASY STEPS:



ROOF PASSAGE

FEATURES & BENEFITS

- Pipe protection for indoor/outdoor transitions
- Made of weather and aging resistant materials
- Quick assembly

Part Number	Dimensions
NICE-RP-SM	5" X 17" x 5" (L/H/W)
NICE-RP-LG	5" X 17" x 10" (L/H/W)

Product certifications available upon request.

WHY CHOOSE NICE DRAIN HOSE & ACCESSORIES

HMAX
QUALITY HVAC ACCESSORIES



DURABLE & ADAPTABLE

FEATURES & BENEFITS

- Durable** - Flexible, high-quality material; stabilized against UV rays, making the hose highly resistant to cracking and micro-perforations
- Adaptable** - Male/female joints at three-foot intervals
- 164ft standard length** - shorter lengths available

Part Number	Dimensions
FDH-58	INTERNAL Ø : 5/8"
FDH-34	INTERNAL Ø : 3/4"

Product certifications available upon request.

Product	Part No.	Dimensions
Three-way Central Joint		
	TWJ-58	Diameter: 5/8"
	TWJ-34	Diameter: 3/4"
Drain Hose Adapter Fittings		
	AF-16	16 MM Yellow
	AF-18	18 MM Red
	AF-20	20 MM Blue
	AF-25	25 MM Green
	AF-32	32 MM Gray

WHY CHOOSE SLIMBOX ROUGH-IN BOX

FEATURES & BENEFITS

The SLIMBOX is a unique solution for all new building and renovation projects where ductless mini-split pipes are roughed-in the wall during construction.

Part Number	Dimensions
SLIMBOX	16" X 4.5" X 3" (W/H/D)

- Fits perfectly between standard 16" studs
- Modular 3/4" and 5/8" outlet
- Central bubble level

- Reversible drain pan - Left or right outlet
- Stud positioning wings & fixing points
- Adaptable - Can be installed vertically or horizontally

- Ready to install - Complete with mounting screws and protection cover to prevent damage and dust deposits during construction



COVER SYSTEMS AND DRAINS

QUALITY & INSTALL READY

ADAPTIVE & REVERSIBLE

EASY INSTALLATION STEPS:



1. Drill holes in the structure for pipes



2. Recreate the same holes on the box



3. Place bubble level in its housing



4. Place and align the box to the holes



5. Fix box to the structure using screws



6. Insert pipes and drain hose



7. Insert wiring and connect drain



8. Cover and protect pipes with paintable plate(!)

(!) Remove plate before installing wall-mounted unit.

Product certifications available upon request.

WHY CHOOSE HMAX SLIMBOX PRO ROUGH IN BOX

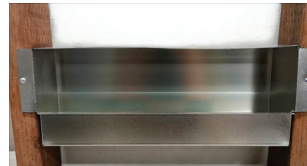
ROUGH-IN BOX FOR DUCTLESS SYSTEMS

SLIMBOX PRO is a pre-engineered, metal rough-in box designed for the installation of ductless evaporator units. Manufactured from corrosion-resistant sheet metal, it ensures a clean, code-compliant, and time-saving installation process for both new construction and retrofit projects.

Part #	Dimensions
SLIMBOX PRO	16" X 5.5" X 3.75" (W X H X D)

KEY FEATURES

- Fits perfectly between standard wall studs for seamless integration with U.S. framing standards
- Stud positioning wings for fast, precise alignment
- Multiple refrigerant line entries for flexible piping configurations
- Integrated dedicated space at the base to securely accommodate a condensate pump without interfering with system operation and for easy access during maintenance
- Equipped with drain knockout
- Ready to install



WHY CHOOSE SUMO RUBBER SUPPORTS

SUPPORTS AND ACCESSORIES

FEATURES & BENEFITS

SUMO Rubber Supports are a comprehensive solution that dampen vibration and noise up to 85% for sensitive areas. Applications include rooftop and ground for piping, HVAC-R equipment, solar panel systems, ducts, rooftop walkway systems, conduit, pipe hangers, cable tray supports and much more.

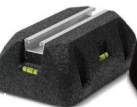

ABSORBS UP TO 85% OF SOUND

REDUCE VIBRATION



- **Superior strength** - Rubber supports made of 100% recycled rubber with a built-in aluminum channel on all size options for premium strength, stability and rust prevention
- **Dampens vibrations and noise up to 85% for sensitive metro areas**
- **Perfect positioning** - Built in bubble levels
- **Surface safe** - No sharp or abrasive edges
- **UV resistant**
- **100% recycled, solid rubber**
- **Wide range of length options** available - from 10" to 39"
- **Working conditions** -40° F / +180° F
- **Standard UNISTRUT size** for all standard clamps and collars

QUICK REFERENCE GUIDE

PRODUCT	PART NUMBER	DIMENSIONS	CAPACITY
	SUMO-XS	4" x 4" (L/H)	310 lbs.
	SUMO-SM	10" x 3.5" (L/H)	350 lbs.
	SUMO-M	18" x 3.5" (L/H)	570 lbs.
	SUMO-LG	23" x 3.5" (L/H)	1,050 lbs.
	SUMO-XL	39" x 3.5" (L/H)	1,400 lbs.
	SUMO-M-H	18" x 4.5" (L/H)	-
	SUMO-LG-H	23" x 4.5" (L/H)	-
	SUMO-XL-H	39" x 4.5" (L/H)	-

Interlocking rubber bricks increase the height of support, providing an extra vibration absorption layer.

Product certifications available upon request.

20 | © 2025 HMAX | Information subject to change without notice. | Visit HMAX.com or contact: 1-844-500-HMAX | info@hmax.com

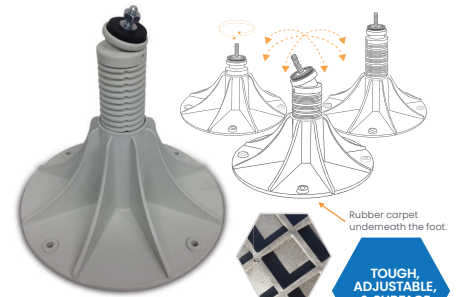
WHY CHOOSE THE ORION MODULAR FOOT

HMAX
QUALITY HVAC ACCESSORIES

ORION MODULAR FOOT

FEATURES & BENEFITS

An adjustable support foot made of glass-fiber reinforced polypropylene. The semi-crystalline polymer is characterized by a high breaking load and great thermal resistance. Thanks to the versatility and speed of assembly, the Orion Foot is recommended for the construction of modular structures, piping and wiring support or any combination of the two with standard strut profiles.



- **Adjustable support foot** - with central body, ball joint and four fixing points
- **Versatility and speed of assembly** decreases install time
- **Superior vibration absorption and surface safe** - with built-in NBR rubber pad
- **Strong** - High breaking load and great thermal resistance, glass-fiber reinforced polypropylene

FASTER INSTALL TIME

TOUGH, ADJUSTABLE, & SURFACE SAFE

PART NUMBER	DIMENSIONS	CAPACITY
ORION-550	Min Height: 7" Max Height: 11" Base diameter: 12"	550 lbs.



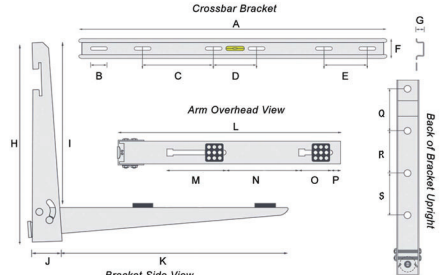
© 2025 HMAX | Information subject to change without notice. | Visit HMAX.com or contact: 1-844-500-HMAX | info@hmax.com | 21

WHY CHOOSE MAX BRACKETS

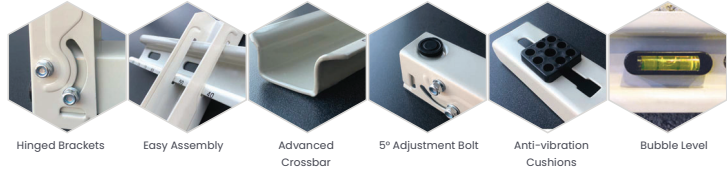


Part Number	Finish
MWB-550	Powder-Coated Galvanized Steel
MWB-550SS	304 Stainless Steel

- FEATURES & BENEFITS**
- **Universal** - Works with all mini-split systems
 - **Easy installation** with bubble level
 - **Heavy gauge** - Superior strength
 - **Quality and durable construction** - Hinged brackets, advanced crossbar, 5° adjustment bolt
 - **Anti-vibration cushions**
 - Available in powder-coated galvanized or stainless steel
 - Maximum load capacity of 550 lbs.



Also available with 31" arm length upon request



DIMENSIONS																		
A	B	C	D	E	F	G	H	I	J	K	L	M	N	O	P	Q	R	S
33.5"	1.75"	8.25"	4.5"	4.5"	2.25"	.75"	17.75"	15"	2.5"	22.25"	22.25"	4.25"	9.25"	3.75"	.75"	3.75"	3.75"	3.75"

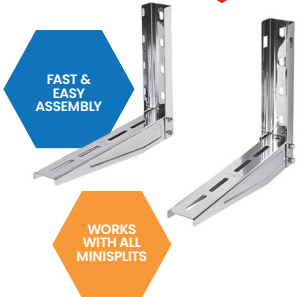
Product certifications available upon request.

WHY CHOOSE HMAX WALL BRACKETS AND RISERS



HERCULES HEAVY-DUTY WALL BRACKETS

- FEATURES & BENEFITS**
- **Fast and easy installation** - Brackets come partially assembled
 - **Universal** - Support arm lengths are fully compatible with all manufacturer's specifications
 - **Powder-coated, electro-galvanized steel (Ra19002) or stainless steel**
 - Brackets should be combined with appropriate vibration absorbers - See page 22



Part Number	Dimensions	Capacity
HWB-700	Powder Coated 20" x 16" (D/H)	700 lbs.
HSSWB-700	Stainless Steel 20" x 16" (D/H)	700 lbs.

MOUNTING BLOCKS

- HMAX offers a full range of mounting blocks to protect condenser units from the elements, with minimum clearance from the ground.
- **High quality UV stabilized polymers**
 - **Complete** with nuts, bolts and washers that can be easily adjusted
 - Unitary plastic-molded construction with closed ends
 - **Easy and compact transportation** - Stackable units

QUICK REFERENCE GUIDE			
Product	Part Number	Dimensions	Capacity
Condenser Risers Special Package			
	FS-PVC-PAIR	18" x 4" (L/H)	350 lbs. per piece
Packaged in boxes of two; includes adhesive strips and mounting hardware.			
RIZER			
	PPS-16	16" x 3" (L/H)	260 lbs. per piece
Produced with high-quality UV stabilized polypropylene. Complete with mounting hardware - ready to install.			



WHY CHOOSE ATLAS & MAX CONDENSER ACCESSORIES

SUPPORTS AND ACCESSORIES

ATLAS LIGHT CONDENSER STAND

FEATURES & BENEFITS

- Lightweight
- Adjustable Height - Up to 24"
- Wide Foot Base - Spreads weight evenly, increasing stability
- Suitable for all residential and light commercial condensers

Part Number	Dimensions	Capacity
GB-550L	33" x 24" x 21" (W/H/D)	440 lbs.



WIDE FOOT BASE

ADJUSTABLE HEIGHT UP TO 24"

Designed to lift the condensing unit off the ground, the ATLAS LIGHT stand provides protection against snow, ice, flooding, and other environmental factors that can cause damage, ensuring greater durability of the system.



Product	Part Number	Capacity	Kit Qty.
Vibration Absorbers for Wall Brackets and Stands	BVD-220	220 lbs. per piece	4 pieces *Includes nuts and washers



Product certifications available upon request.

24 | © 2025 HMAX | Information subject to change without notice. | Visit HMAX.com or contact: 1-844-500-HMAX | info@hmax.com

WHY CHOOSE HMAX CONDENSER'S ACCESSORIES

HMAX
QUALITY HVAC ACCESSORIES

MAX ROOF CONDENSER COVER

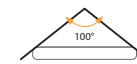
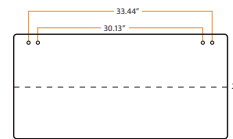
FEATURES & BENEFITS

- Powder-coated condenser cover with stainless steel bolts
- Protect your investment - Keep your condenser clean of debris and safe from the elements
- Customizable - Custom colors available upon request

Part Number	Dimensions
MR36-21 Packaged individually	36" x 21" (D/H/W)



Keeps Condenser Clean



Your Vision, Our Expertise

At HMAX, we transform your ideas into reality. Whether it's a unique design, specific dimensions, or specialized functionality, our team is ready to deliver custom HVAC solutions tailored to your needs. With decades of experience, we stay ahead of industry trends to provide innovative and high-quality products. Let us know how we can help bring your vision to life.

© 2025 HMAX | Information subject to change without notice. | Visit HMAX.com or contact: 1-844-500-HMAX | info@hmax.com | 25

WHY CHOOSE REFRIGERATION BALL VALVES & FLARE FITTINGS

HMAX
QUALITY HVAC ACCESSORIES

FEATURES & BENEFITS

Premium-performance Refrigeration Ball Valves, specifically designed for use in industrial and commercial refrigeration systems; tailored to VRF systems and suitable for any HVAC-R industry system.

- **Strict manufacturing process** - Valves are manufactured using alloy with a silver percentage between 34 and 40%
- **Rigorous testing** - Each valve is tested 1.34 times higher than the nominal pressure
- **Highly efficient** in HVAC-R industry
- **Certified materials only**
- Seats are made of Nylon reinforced with carbon graphite
- **Guaranteed quality seal** - Check valve shutters are made of HNBR material
- Convenient access port
- Copper stubs for brazing or press fittings



HVAC-R
INDUSTRIAL
TOUGH



PREMIUM
RAW MATERIALS
& QUALITY



MADE IN ITALY
In Compliance with the
Highest Industry Standards

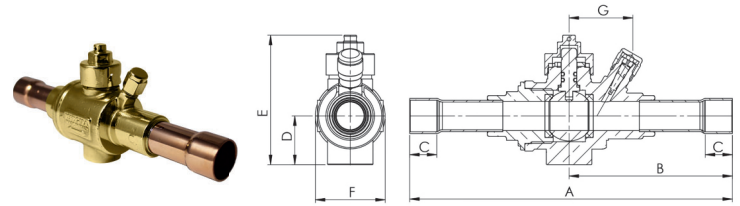
Custom-fitted insulation covers
available for all valves

Tested in Italy.
Product certifications available upon request.

2 WAY BALL VALVE ODS X ODS CONNECTIONS

HMAX
QUALITY HVAC ACCESSORIES

2 WAY BALL VALVE WITH SCHRAEDER PORT - ODS X ODS CONNECTIONS							
Part Number	Ø	Sphere Passage	PS (psi)	TS (F)	Kv	Optional Insulation Cover	
REF-14-SODS	1/4"	3/8"	754	-40 +302	1.1	REF-INSUL-A	
REF-38-SODS	3/8"	3/8"	754	-40 +302	3.5	REF-INSUL-A	
REF-12-SODS	1/2"	3/8"	754	-40 +302	6.7	REF-INSUL-A	
REF-58-SODS	5/8"	5/8"	754	-40 +302	14.8	REF-INSUL-B	
REF-34-SODS	3/4"	5/8"	754	-40 +302	16.9	REF-INSUL-B	
REF-78-SODS	7/8"	3/4"	754	-40 +302	29.3	REF-INSUL-E	
REF-118-SODS	1 1/8"	1"	754	-40 +302	55.1	REF-INSUL-D	
REF-138-SODS	1 3/8"	1.25"	754	-40 +302	114.7	RED-INSUL-F	



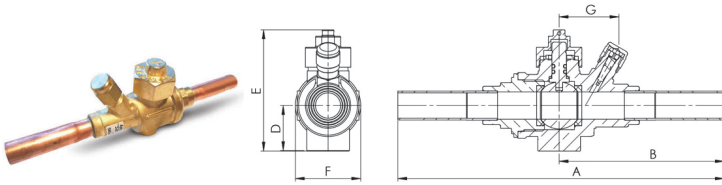
2 WAY BALL VALVE WITH SCHRAEDER PORT - ODS X ODS CONNECTIONS DIMENSIONS								
Part Number	Size	A	B	C	D	E	F	G
REF-14-SODS	1/4"	5"	2.54"	0.27"	0.75"	2.28"	1.22"	0.96"
REF-38-SODS	3/8"	5.20"	2.64"	0.35"	0.75"	2.28"	1.22"	0.96"
REF-12-SODS	1/2"	5.55"	2.81"	0.47"	0.75"	2.28"	1.22"	0.96"
REF-58-SODS	5/8"	6.55"	3.32"	0.55"	0.98"	2.62"	1.42"	1.30"
REF-34-SODS	3/4"	6.47"	3.28"	0.55"	0.98"	2.62"	1.42"	1.30"
REF-78-SODS	7/8"	8.17"	4.17"	0.70"	1.18"	3.29"	1.85"	1.48"
REF-118-SODS	1 1/8"	8.49"	4.41"	0.79"	1.30"	3.50"	2.16"	1.54"
REF-138-SODS	1 3/8"	8.20"	4.47"	0.85"	1.50"	3.75"	2.60"	2.15"

Tested in Italy.
Product certifications available upon request.

2 WAY BALL VALVE-STRAIGHT COPPER TUBE FOR PRESS FITTINGS

REFRIGERATION BALL VALVES
AND FLARE FITTINGS

2 WAY BALL VALVE WITH SCHRADER PORT - STRAIGHT COPPER TUBE FOR PRESS FITTINGS						
Part Number	Ø	Sphere Passage	PS (PSI)	TS (F)	Kv	Optional Insulation Cover
REF-14-WFS	1/4"	3/8"	754	-40 +302	1.1	REF-INSUL-A
REF-38-WFS	3/8"	3/8"	754	-40 +302	3.5	REF-INSUL-A
REF-12-WFS	1/2"	3/8"	754	-40 +302	6.7	REF-INSUL-A
REF-58-WFS	5/8"	5/8"	754	-40 +302	14.8	REF-INSUL-B
REF-34-WFS	3/4"	5/8"	754	-40 +302	16.9	REF-INSUL-B
REF-78-WFS	7/8"	3/4"	754	-40 +302	29.3	REF-INSUL-E
REF-118-WFS	1 1/8"	1"	754	-40 +302	55.1	REF-INSUL-D
REF-138-WFS	1 3/8"	1.25"	754	-40 +302	114.7	REF-INSUL-F



2 WAY BALL VALVE WITH SCHRADER PORT - STRAIGHT COPPER TUBE FOR PRESS FITTINGS DIMENSIONS								
Part Number	Size	A	B	C	D	E	F	G
REF-14-WFS	1/4"	6.14"	3.11"	0.75"	2.28"	1.22"	0.96"	0.96"
REF-38-WFS	3/8"	6.34"	3.21"	0.75"	2.28"	1.22"	0.96"	0.96"
REF-12-WFS	1/2"	6.65"	3.37"	0.75"	2.28"	1.22"	0.96"	0.96"
REF-58-WFS	5/8"	7.08"	3.58"	0.98"	2.62"	1.42"	1.29"	1.30"
REF-34-WFS	3/4"	7.08"	3.58"	0.98"	2.62"	1.42"	1.29"	1.30"
REF-78-WFS	7/8"	8.17"	4.17"	1.18"	3.29"	1.85"	1.48"	1.48"
REF-118-WFS	1 1/8"	8.5"	4.41"	1.3"	3.35"	2.16"	1.47"	1.54"
REF-138-WFS	1 3/8"	10.71"	4.98"	1.5"	3.75"	2.6"	2.15"	2.15"

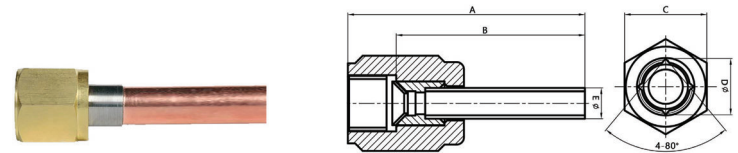
Tested in Italy.
Product certifications available upon request.

MAXFLARE FITTINGS FOR PRESS CONNECTIONS

HMAX
QUALITY HVAC ACCESSORIES

- FEATURES & BENEFITS**
- Specifically designed to **reduce refrigerant leaks**
 - Prevents deformation and cracking** with stainless-steel core
 - Saves time and money** on maintenance and installation
 - Easy cleaning and brazing**

MAXFLARE - FITTINGS FOR PRESS CONNECTIONS		
Part Number	Connection	
	SAE Flare	ODF
MF-14	1/4"	1/4"
MF-38	3/8"	3/8"
MF-12	1/2"	1/2"
MF-58	5/8"	5/8"
MF-34	3/4"	3/4"
MF-78	7/8"	7/8"



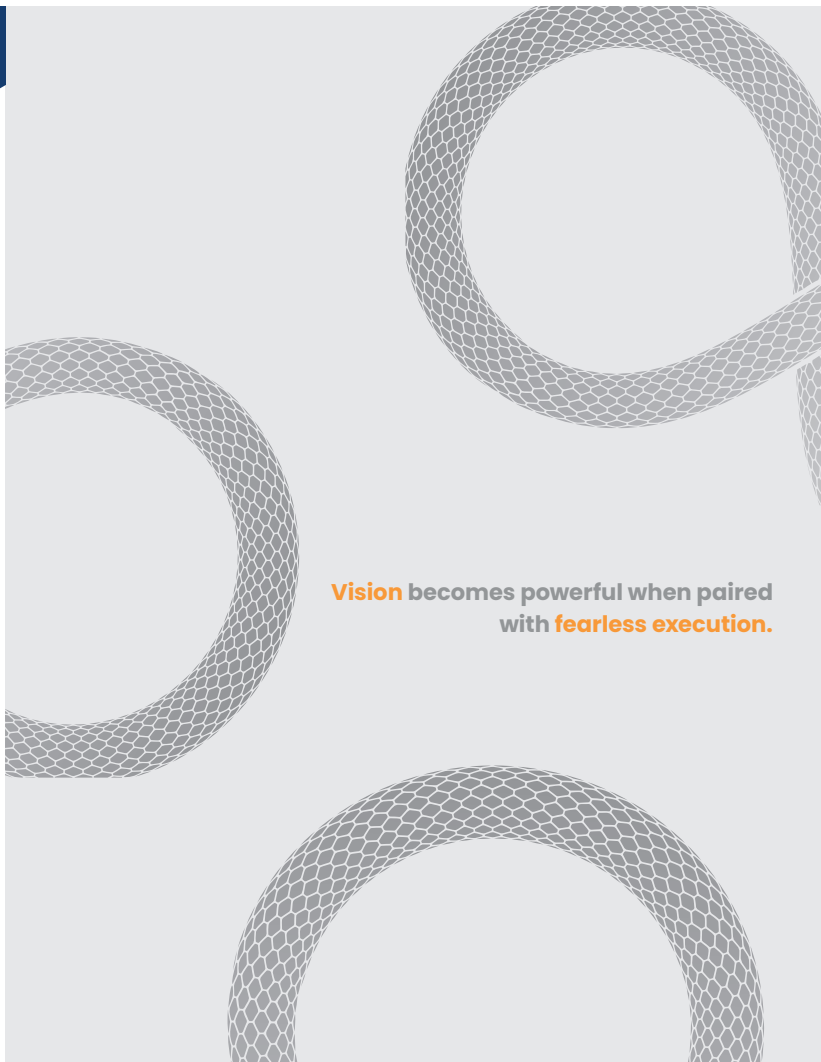
MAXFLARE - FITTINGS FOR PRESS CONNECTIONS DIMENSIONS								
Part Number	NPS	A	B	C	D	E	STD Torque	MAX Torque
MF-14	1/4"	3.82"	3.50"	0.67"	0.46"	1/4"	12 NM/106 IN-LB	20 NM/177 IN-LB
MF-38	3/8"	3.89"	3.50"	0.87"	0.64"	3/8"	26 NM/230 IN-LB	30 NM/266 IN-LB
MF-12	1/2"	3.97"	3.50"	0.95"	0.77"	1/2"	47 NM/416 IN-LB	60 NM/531 IN-LB
MF-58	5/8"	4.09"	3.50"	1.06"	0.89"	5/8"	48 NM/425 IN-LB	100 NM/886 IN-LB
MF-34	3/4"	3.89"	3.50"	1.26"	1.08"	3/4"	78 NM/690 IN-LB	200 NM/1772 IN-LB
MF-78	7/8"	3.89"	3.50"	1.50"	1.28"	7/8"	85 NM/750 IN-LB	220 NM/1949 IN-LB

Product certifications available upon request.

LINESET FEATURES COMPARISON CHART



FEATURES	ISOTECH UV Lineset	ISOPOLAR ISOTUFF Lineset	UNIMAX Lineset
Copper	Certified 99.9% pure ASTM B280 copper with protective polymer coating	Superior material - ASTM B280 type ACR copper with crimped ends to keep inside surfaces clean	Copper tube extruded according to ASTM standards
Jacket	Sunlight UV, tear, fire and water (UL94) resistant sheath	Durable, tear-resistant jacket marked by the foot for maximum waste reduction	Self-extinguishing, Class O (ASTM E84) fire rating and meets ASTM standard for water permeability
Insulation	Superior closed-cell polyethylene insulation with certified R-Values to meet city codes and regulations	Reliable, closed-cell polyethylene insulation	UL approved insulation with tough jacket
Resistance	Formicary corrosion resistant (moisture, oxygen and VOCs)	High resistance to moisture and water-vapor intrusion	Excellent insulation resistance to weather, UV, ODP, GWP, water and chemicals
Ease of Installation	Quick and easy install - No field-applied coating or jacketing	Quick and easy install - No field-applied coating or jacketing	Highly flexible with multiple configurations and lengths (suction line and liquid line) to suit the needs of any job



Vision becomes powerful when paired with fearless execution.



**HMAX - Quality HVAC
Accessories**
1-844-500-HMAX
info@hmax.com

Copyright © 2025 HMAX
All rights reserved.
Subject to change without notice.

© **[@hmax_hvac](#)**
HMAX.com

4/26



**SCAN FOR SKU
and ORDERING**

or go to: HMAX.com

Full catalog available
for special order.